

## Professional Mesh or Baffle Liner Installation

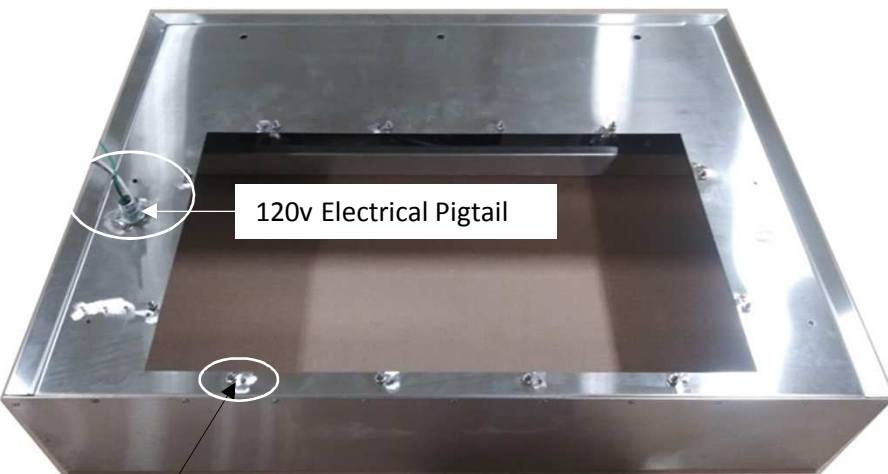
### IMPORTANT INFORMATION PLEASE READ AND FOLLOW

- Do not remove permanently affixed labels, warnings, or plates from the product. This will void the warranty.
- Please observe all local and national codes or ordinances that cover: General installation, Exhaust Rates, Makeup Air, Duct Materials / Length, Exhaust openings, and electrical installation, etc.
- The installer should leave all instructions with the consumer for local inspectors use and future reference.

### STEP 1

Place the Stainless Exhaust Liner on a padded surface positioned as shown, being careful not to scratch the surface. Remove all twelve of the Hex Nuts and Star Lock Washers from the mounting studs around the perimeter of the liner motor box cut out. The main electrical pigtail is shown on the left side top of liner.

Front of Liner



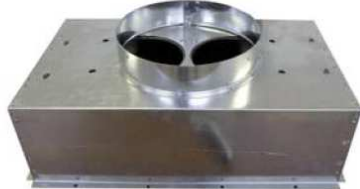



Rear of Liner



(12) – MOTOR BOX THREADED STUDS WITH HEX NUTS AND STAR LOCK WASHERS AROUND INSIDE PERIMETER OF LINER

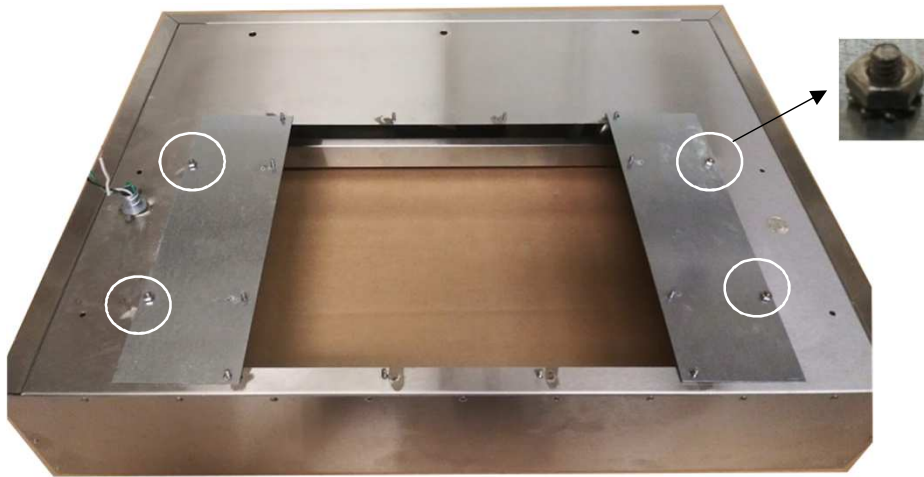
### FLANGE / MOTOR BOX IDENTIFICATION

<p>8" Round duct flange</p>  <p>LM600 (MB600) motor box with adaptor plates</p>	<p>10" round duct flange</p>  <p>SM1000 motor box no adapter plates needed</p>
<p>10" round duct flange</p>  <p>SM1200 motor box no adapter plates needed</p>	<p>10" round duct flange</p>  <p>FP10 adapter plate for remote blower applications no adapter plates needed.</p>

## Professional Mesh or Baffle Liner Installation

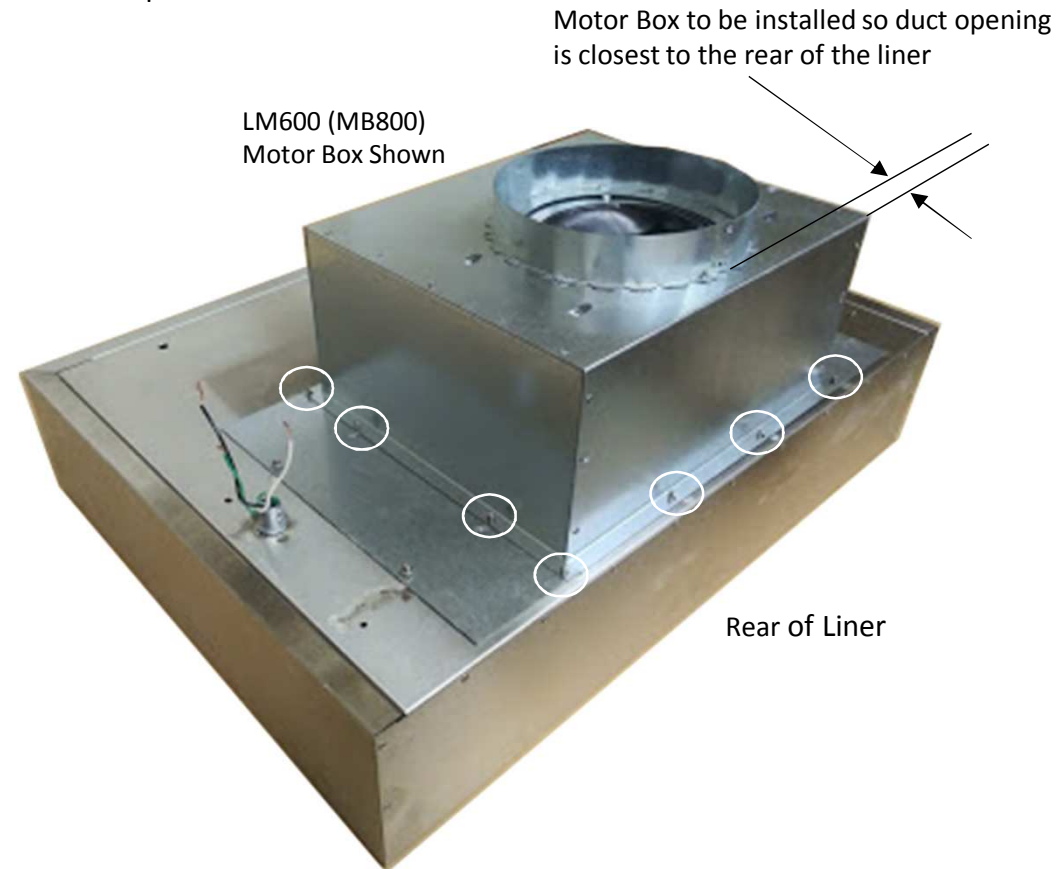
### STEP 2

For LM 600 (MB600), the motor box installs with adapter plates on the studs on the top of the liner. Use the star lock washers and supplied nuts to secure the plates on the two left and two right studs (circled areas).



### STEP 3

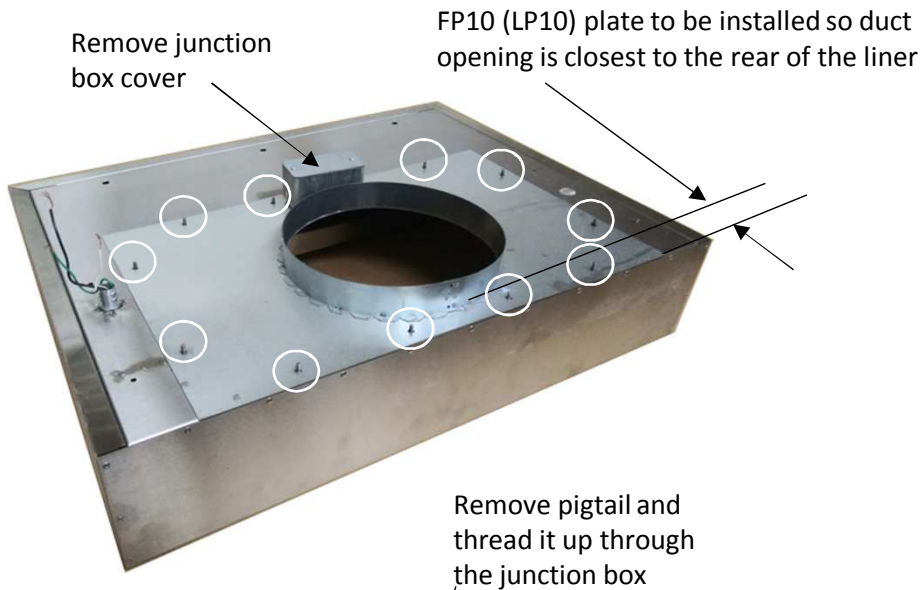
Place the motor box over the studs with the duct towards the back of the liner. Install the star lock washers and hex nuts on the threaded stud and tighten the hex nuts. Total (8) locations if using a LM600 (MB600) motor box with adaptor plate and (12) if installing the SM1000/1200 or the LP10 (FP10) (No adaptor plates are used on the SM1000/1200 or the LP10 (FP10)) Go to Step 5.



## Professional Mesh or Baffle Liner Installation

### STEP 4

For the FP10 (LP10) install the plate over the (12) threaded studs with the duct collar towards the back of the liner and secure using the star lock washers and hex nuts. Remove the junction box cover, remove the electrical pigtail and thread it up from the inside of the liner through the junction box and out of the top of the liner as shown.



### STEP 5

Inside every liner there are two 120V receptacles. They are used to power the blower unit(s). If a SM1000 or SM 1200 is used both receptacles will be used. For all other motors and remote applications only one receptacle will be used. Plug the power lead from the blower unit into the receptacle(s).



### STEP 6

Install the assembled ventilator (Liner and Motor Boxes) into the wood range hood so that the bottom rear edge of the liner is flush with the bottom rear edge of the hood base back. Attach the liner to the range hood using the supplied screws through the pre drilled holes located around the perimeter of the inside of the liner. Have a qualified electrician attach the electrical leads and attach the appropriate ductwork using fastener's sealant. Follow all appropriate local and national codes during installation. Please note the blower motors are easily removed and removing them can help greatly with installation. Attaching the duct from the inside of the liner in many instances makes installation much easier.



Line Bottom Rear Edge of Liner with Bottom Rear Edge of Base Back

