



STEP #1

Install wood range hood on wall. Use standard upper cabinet installation method. Range hood must be securely attached to the wall and able to support up to 85lbs.



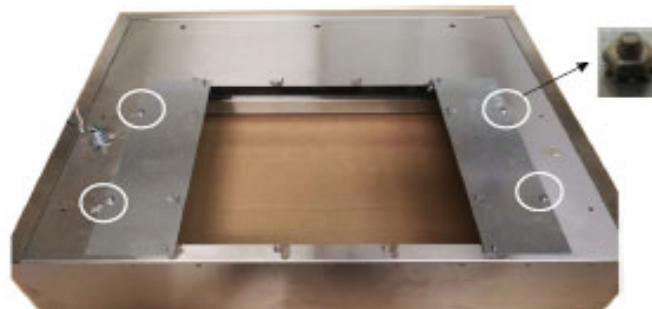
STEP #2

Place the stainless liner on a padded surface positioned as shown below, being careful not to scratch the surfaces. Remove all the hex nuts and washers from the mounting studs.



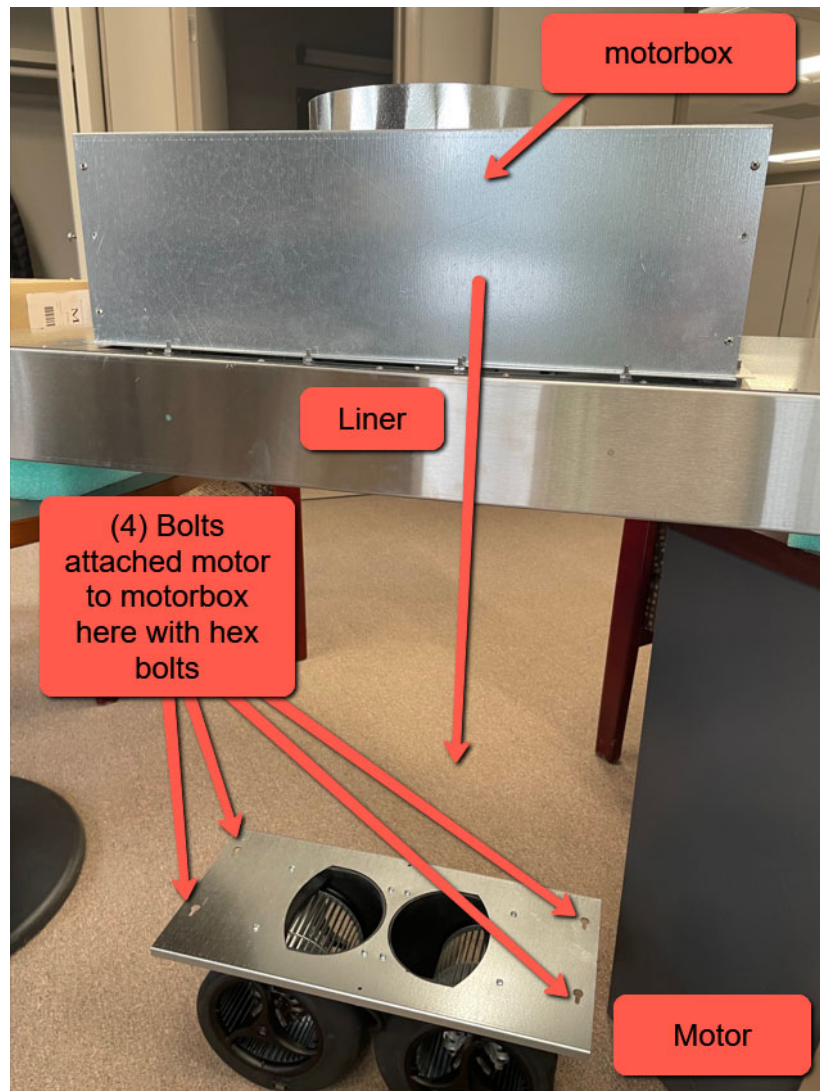
STEP #3

For the SM600 only, the motor box installs with adapter plates on the top of the liner. Use the star lock washers and supplied nuts to secure the plates on the two left studs and two right studs (circled areas).



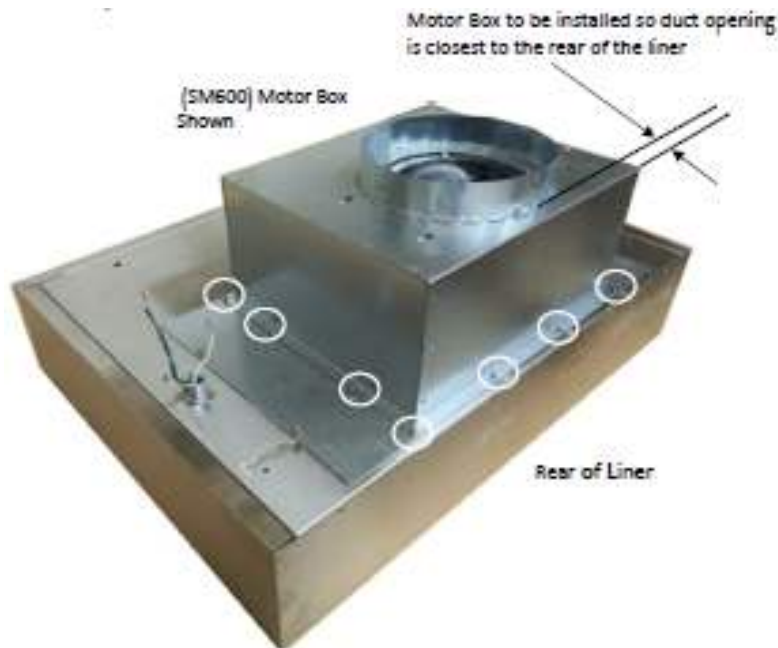
STEP #4

Loosen the 4x nuts on the inside of the motor box. Then shift the blower(s) on mounting plate to allow them to detach (keyhole). Motor box does not need to be mounted to liner to remove the motor.



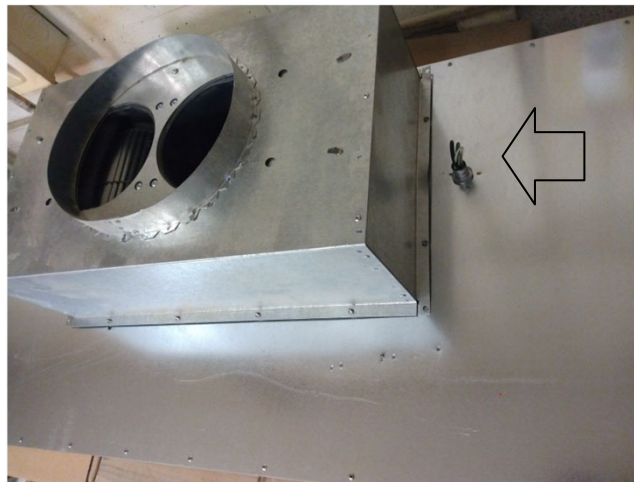
STEP #5

Place the motor box over the studs with the duct towards the back of the liner. Install the washers and hex nuts on the studs and tighten snugly.



STEP #6

Step #6 should be completed by a licensed electrician. Before lifting the SS base in place, make your 120v electrical connection. See location of electrical pigtail below.



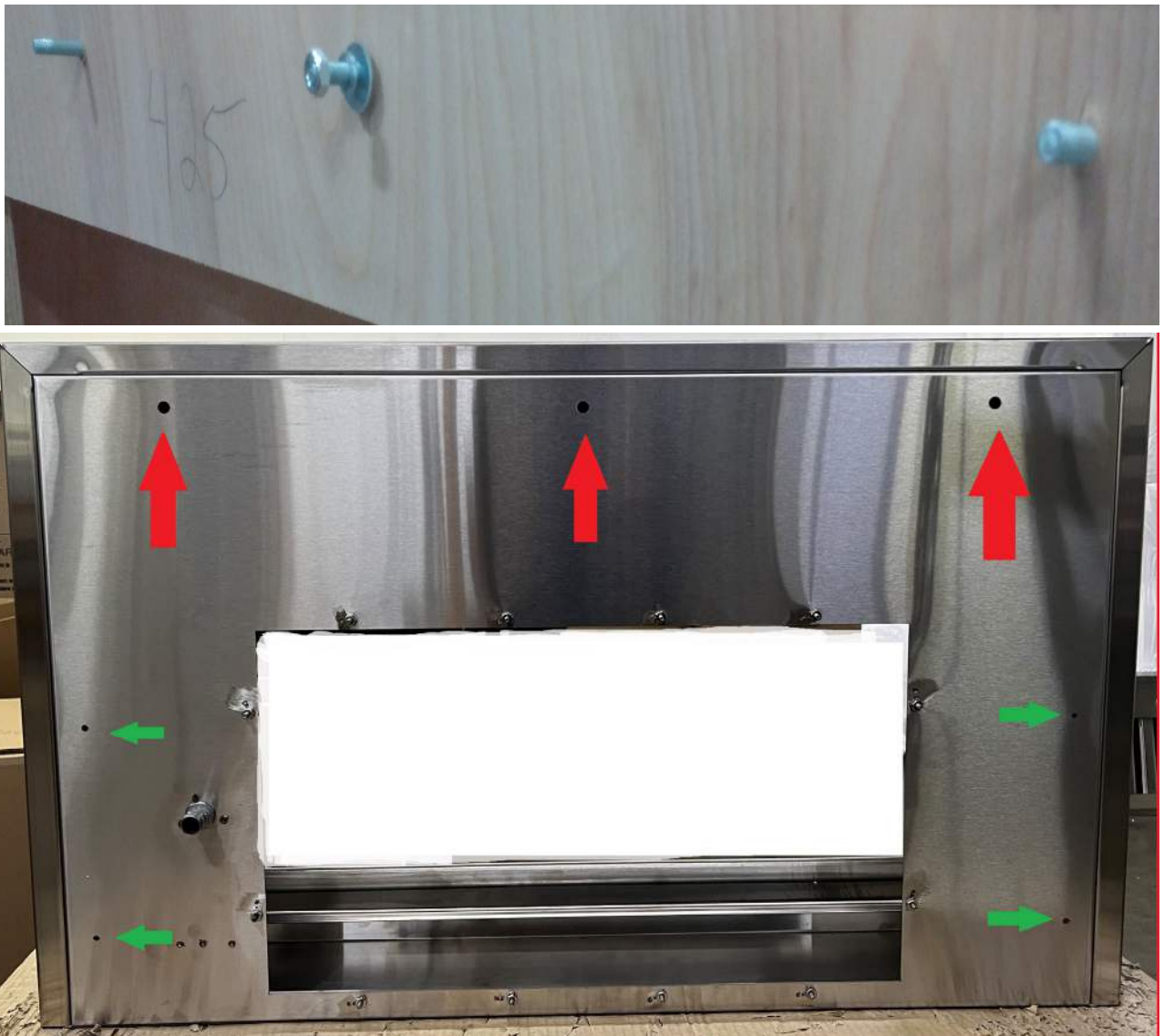
STEP #7

On the inside of the wood range hood, you will find the hardware for mounting the unit – nut, washer and lock washer



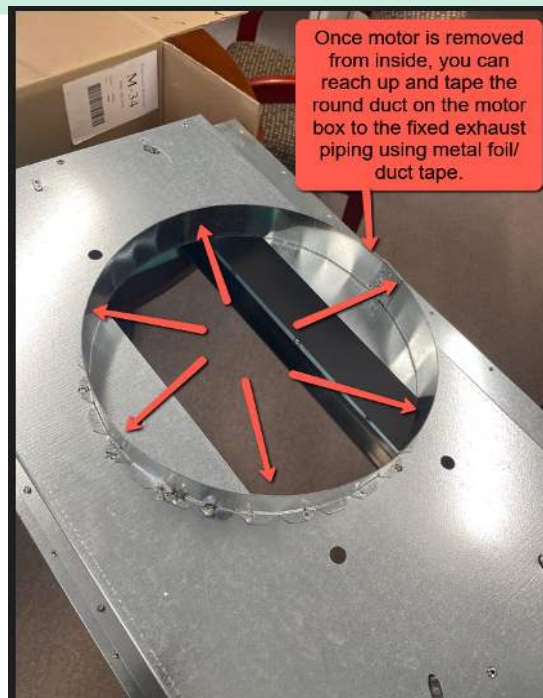
STEP #8

Lift the SS lower stainless base up to the bottom of the wood range hood. Align the front mounting studs with the holes in the upper surface of the SS base (red arrows on lower drawing). Then, using supplied nuts and washers, tighten snugly. Use screws to attach the sides of the SS base to the sides of the range hood (green arrows).



STEP #9

Step #9 should be completed by a licensed HVAC professional. Make your internal duct connection. Ensure a tight and secure seal. Then reinstall motor(s) in motor box (reverse procedure of step #4)



STEP #10

Step #10 should be completed by a licensed electrician. Locate the internal outlet inside of the liner. There are two 120v receptacles. If using the SM600, plug motor into only one of the receptacles. If using the SM1200, use both receptacles.



120v
Outlets