

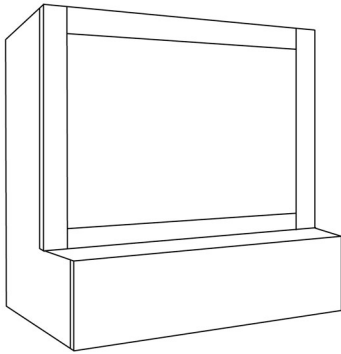


L2 Series	
Standard Widths	30, 36, 42, 48, 54 and 60 or custom
Standard Heights	24, 30, 36, 42 or custom
Removable panel	-Upper door panel is removable. – upper door is applied and has 1/8” reveal on both sides and the top
Standard Assumptions	<p>--Grain will be vertical on upper door and sides - Grain on bottom door or slab will be horizontal</p> <p>Door RULES Customers can define number of door panels on base and top – they do not have to be the same</p> <p>Door RULES 30” wide hoods – Can have 1-2 panels not 3 if raised 6” base – panels must be flat not raised or can increase base height to 8.75” Single panel – Requires MDF Panels – are all equal distance apart Upper panel – 1/8” reveal on top and two sides</p> <p>- Top door – customer will define number of panels, hoods which are over 48” AND not MDF will have 3 equal door panels. Single doors only available when MDF</p> <p>- If door on base– customer will define number of panels, hoods which are over 48” AND not MDF will have 3 equal door panels. Standard base is 6” - Base door must be FLAT panel or increased to 8.75” for raised. Grain on base will be horizontal</p> <p>- Top depth not including applied door is 16</p>
Depth of hood	22.25"
Ventilator	Stanisci Stainless Mesh or Value liner
Baffle liner Adjustment	Increase base height from 6” to 8.75” if getting baffle
Available option	--Horizontal Grain – n/c -Upper door delete Sorrento pull out spice racks
Available customization	Yes – recommended if using aftermarket vent

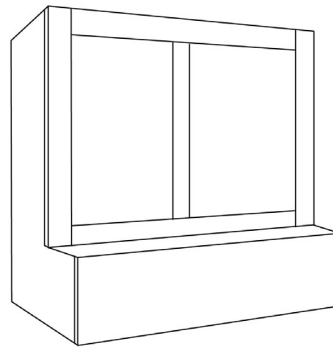
Please note single panel upper only available on Paint Grade MDF

Two panel upper only available on 48" wide or less

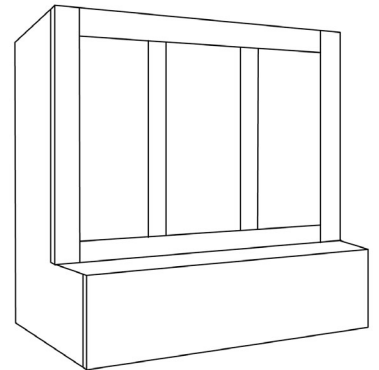
L2 - 1



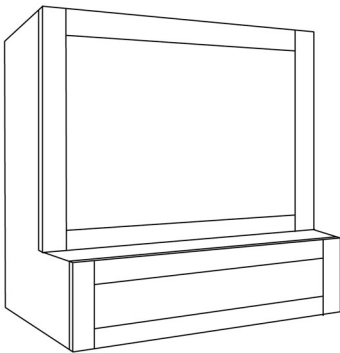
L2-2



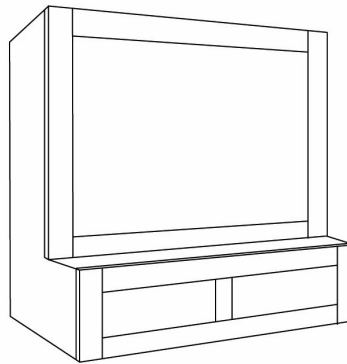
L2-3



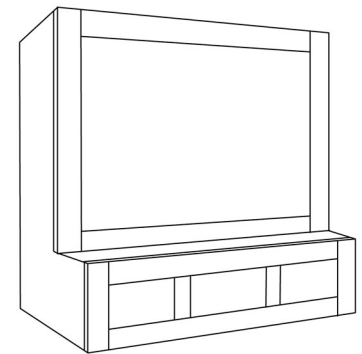
L2BP- 1-1



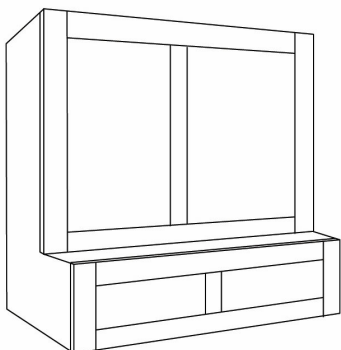
L2BP 1-2



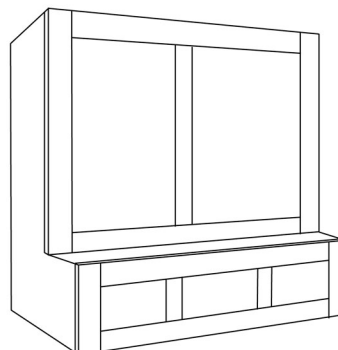
L2BP 1-3



L2BP- 2-2



L2BP- 2-3



L2BP- 3-3

