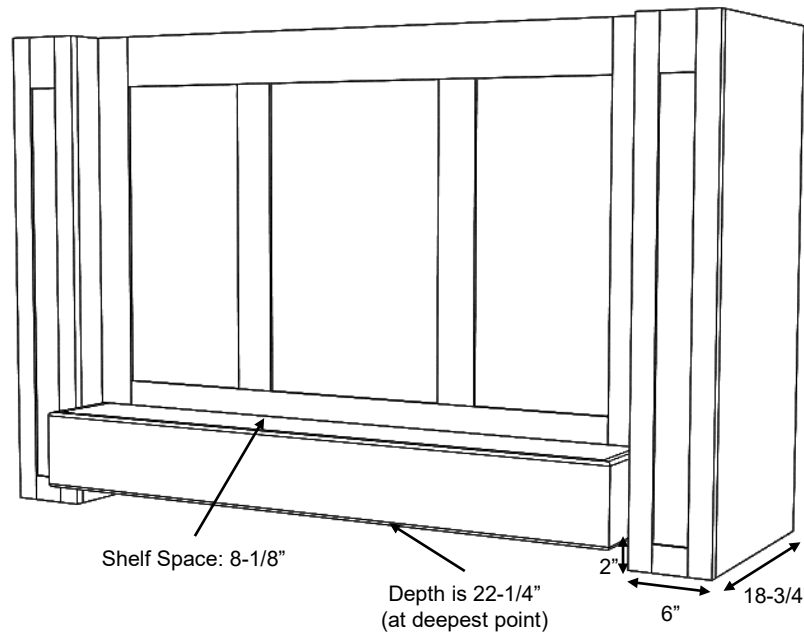


*H2 Series shown with SL Base (H2SL)  
and #1 Classic molding  
(42" – 54" wide will have 2 center panels)*



*H2 Series shown with Hardwood Base (H2HW)  
(60" – 72" wide will have 3 center panels)*

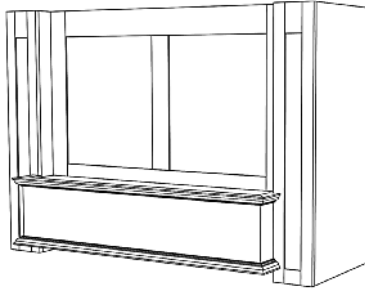
## H2 Series

Standard Widths	42, 48, 54, 60, 66, 72 (Reduced widths available) To calculate minimum width, take range width plus 12". Example: A 36" range would get a 48" wide hood. (36 + 12 = 48)
Standard Heights	26, 32, 38, 44, 50 To calculate height, take ceiling height minus 64". Example: A 96" ceiling would have a 32" tall hood. (96 - 64 = 32)
Removable Options	Removable Panel is standard (MRP) 2" fixed top rail available by request (MRP-2TR) – see modifications section.
Standard Assumptions	Side columns will always have a flat panel
Ventilation	Hood must be a minimum of 12" wider than available vent width. Example: To use a 36" vent model, the hood should be a minimum of 48" wide
Available Moldings	#1 Classic, #2 Simple, #3 Basic
Grain Direction	Vertical (Base is horizontal)

Standard Heights: 26, 32, 38, 44, 50

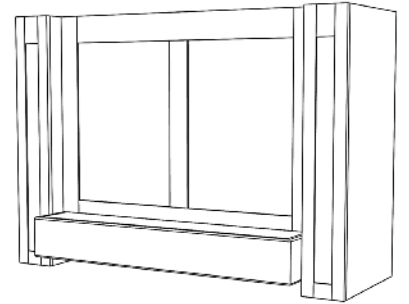
#### H2- Standard Base

H2 42  
H2 48  
H2 54  
H2 60\*  
H2 66\*  
H2 72\*



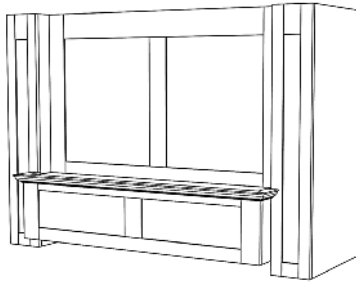
#### H2- Hardwood Base

H2HW 42  
H2HW 48  
H2HW 54  
H2HW 60\*  
H2HW 66\*  
H2HW 72\*



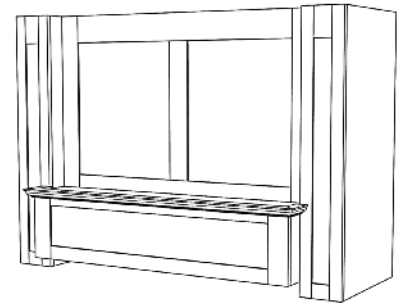
#### H2- RS Base

H2RS 42  
H2RS 48  
H2RS 54  
H2RS 60\*  
H2RS 66\*  
H2RS 72\*



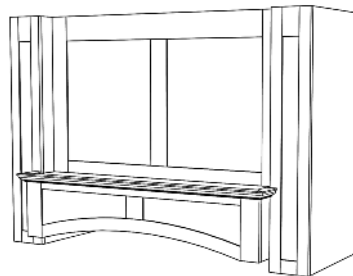
#### H2- RSS Base

H2RSS 42  
H2RSS 48  
H2RSS 54  
H2RSS 60\*  
H2RSS 66\*  
H2RSS 72\*



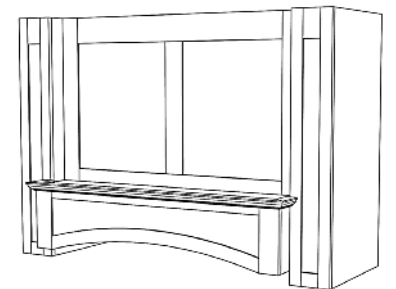
#### H2- RA Base

H2RA 42  
H2RA 48  
H2RA 54  
H2RA 60\*  
H2RA 66\*  
H2RA 72\*



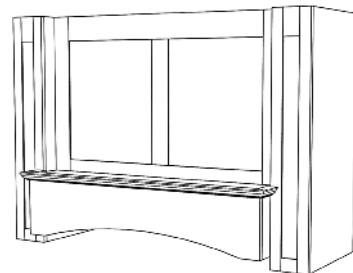
#### H2- DP2 Base

H2DP2 42  
H2DP2 48  
H2DP2 54  
H2DP2 60\*  
H2DP2 66\*  
H2DP2 72\*



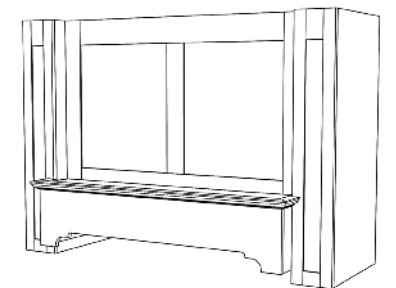
#### H2- SL Base

H2SL 42  
H2SL 48  
H2SL 54  
H2SL 60\*  
H2SL 66\*  
H2SL 72\*



#### H2- DP1 Base

H2DP1 42  
H2DP1 48  
H2DP1 54  
H2DP1 60\*  
H2DP1 66\*  
H2DP1 72\*



\* Top center panel is three panels rather than two, due to width of hood