

**BUILDING CODES** - Each municipality has their own building codes. Those codes will supersede any recommendations made in this catalog. Please refer building code questions to your local inspector since they will be responsible for the interpretation of the code.

**FINISHING** – Stanisci Design does not offer any finishing, and are sanded to 180 grit. Hoods can be drop-shipped into the kitchen dealer or cabinet manufacturer you have specified.

**PANELS** – When ordering a hood with a door – you can pick any of the Framing Bead choices with any of the Panel Raises. For example: a shaker style door would be #445 / Flat #1997. See FAQ Page for available profile choices.

**MOLDINGS** – Many hood designs are available with several different molding styles: #1 Classical, #2 Simple or #3 Basic. Molding is along the base of hood – not the top crown. Top crown is supplied in field.

**HOOD HEIGHT** – Stanisci hoods should be mounted a minimum of 30” above the cooking surface (or 66” from the floor) unless the range manufacturer specifies more distance is needed.

**CUSTOM SIZES** – Stanisci hoods are built-to-order based on your specifications. Each hood series is offered in a range of standard sizes, or you can select an in-between size (custom widths may require an additional fillers charge).

**PAINT GRADE** – When choosing Paint Grade – please review specifications on the FAQ page for Paint Grade Materials. This information page will detail hood body construction and use of Hybrid Doors for this species. Maple is a stain grade species and **not** intended for painted applications. Finish issues related to painting Maple are not warrantable.

**RENDERINGS** - Libraries are available for most rendering software. See 'Rendering Software Libraries' of our website to download latest 2020 library, and instructions for accessing AutoKitchen and ProKitchen libraries. For other rendering software, please reach out to us for information.

**MODIFICATIONS & ACCESSORIES** – Please review the Modifications & Accessories section to see available options such as various Removable Options, Wood Battens, Sorrento Spice Racks and Corbel offerings.

**VENTILATION OPTIONS** - We have standard liners, Stainless Mesh and Stainless Baffle liners from 300-1200 cfm. We can also custom design hoods around most customer supplied vents.

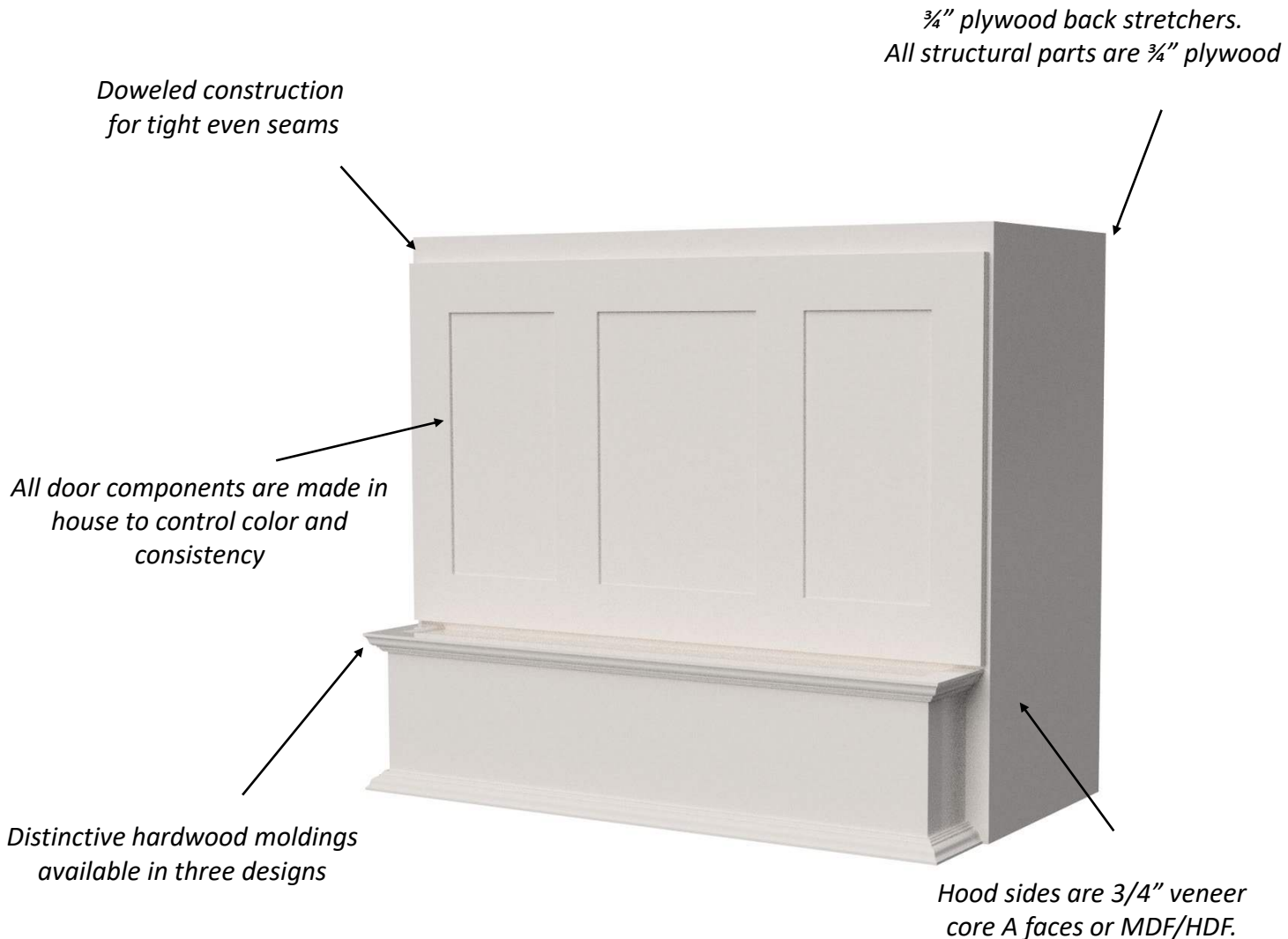
**LEAD TIMES** – Lead times range from 2 weeks for straight hoods, and 3 weeks for hoods with curve(s) and/or door panels. Lead times do not include shipping.

**SHIPPING/ FREIGHT-** Wood hoods ship LTL Freight in re-enforced crates, and any ventilation will be strapped to the top. Ventilation that ships separate from the wood hood is shipped Ground or LTL Freight. See ventilation specifications pages for specific details

**SALES** - Stanisci Design hoods are sold wholesale only exclusively to cabinetry professionals. Retail customers are welcome to reach out to us for questions, however we will not discuss pricing and order details.

**TSCA / CARB** - Our hoods are TSCA /CARB compliant and will come with all appropriate labels.

Stanisci Design uses only the finest materials. Range hoods often become the focal point of the kitchen. All solid wood components are hand selected for color. All Stanisci Design Products are TSCA (C.A.R.B) compliant. Hoods are sanded to 180 grit, ready to be finished.



## Paint Grade Materials

The specifications below will provide information and define our Paint Grade species offering. This material selection is made from the best products available in the market and will give you superior results when painting.

**Hybrid Hood** – Paint Grade will be constructed using for the body of the hood, 1/2” thick MDF or HDF with no veneer thus providing a smooth surface to paint. We are also utilizing a 3/4” thick plywood core with an 1/8” HDF (high density fiber) outer layer, commonly referred to as a Combi Core. Both materials present a smooth surface to finish and are considered the best materials on the market for painting. All molding and hardwood pieces will continue to be Paint Grade Hard Maple. All structural parts will continue to be 3/4” thick veneer core plywood.

**Superior Surface** for curved hoods – We use a bendable material exclusively designed for painting on all our curved hoods. This material is referred to as Superior Surface. It will be used on the curved section of the hood. This is a paintable man-made material which is impregnated with resin. This is a proprietary material which we have worked with our suppliers to develop for our curved hoods. It is very smooth, stable and has great adhesion.

**Hybrid Doors** – Doors will be constructed with a Paint Grade Hard Maple frame and MDF panels – raised or flat panels. Hybrid center panels have been tested extensively in the market and have proven to be effective in providing a more durable and superior product for painting. The machining on the hybrid MDF panel profiles is just as precise and clean cut as with solid wood panels. The Hybrid MDF panel provides a more stable product that does not expand and contract like a solid wood center panel. The elimination of center panel shrinking virtually eliminates raw material showing along the outside of a center panel as the seasons change. Eliminating expansion of the center panel also helps to reduce hairline cracks that may develop in the mortise and tenon joint of the door framing.

### Paint Grade:

Hood/Cabinet Sides: 3/4” thick Combi Core Plywood

Mitered Portions: 1/2” thick MDF/HDF

Curved Sections: Superior Surface



**Maple** is hard and heavy with good strength properties, in particular it's high resistance to abrasion and wear. The raw wood color ranges from near white to a dark reddish brown. The wood has a close fine texture and is generally straight grained. Maple is stain grade Maple & **not** intended for Painted Applications. Finish issues related to painting Maple are not warrantable. Please use Paint Grade for all painted applications.

**Alder** is extremely soft hardwood of medium density. Colors range from light brown with a yellow tinge to light brown with a reddish tinge. Alder is fairly straight grained with a uniform texture. This wood may have pin knots and mineral streaks. Mineral streaks and other natural variations help create the personality of this product.

**Rustic Alder** material will allow for varying size knots & other sound characteristics including mineral streaks. Both sapwood & heartwood can be present in varying amounts.

**Hickory** is a very hard, very heavy and dense hardwood which demonstrates extreme variations in color from nearly white to dark brown. Grain patterns can be bold and prominent with irregular characteristics that are associated with tree growth. Burls, water stains, mineral streaks and sound knots are typical and are not considered defects.

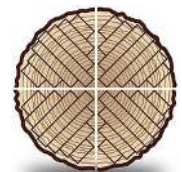
**Cherry** is considered a medium density wood with moderate weight and strength. The heartwood of cherry ranges from light to dark reddish brown while the sapwood may be near white. The heartwood darkens with age and light exposure, this change can be dramatic. Cherry has a fine and uniform grain pattern with a smooth texture. Acceptable characteristics include brown flecks, natural gum pockets, mineral streaks and pin knots.

**Walnut** is an exceptionally beautiful and stable hardwood whose traits are strongly defined throughout the history of woodworking. Grain patterns range from straight to varied; providing striking depth when finished in natural tones. This specie's coloration fluctuates from dark brown to a purplish black.

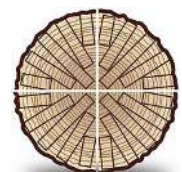
**Plain Sawn White Oak** is White Oak lumber is characterized by uneven cathedral grain that would be similar in appearance to Red Oak grain patterns. Plain Sawn White Oak however has a neutral light to medium brown color sometimes with an olive hue. Known for strength and durability.



**Quarter Sawn White Oak** is cut radially (90-degree angle from the growth rings) instead of with the grain and produces vertical and uniform grain lines that are straight, tight and run the length of the board, sometimes creating prominent ray flecks. Structural benefits include that it reduces twisting, warping and cupping, holds finishes better, and does not allow liquids to readily pass through it.



**Rift Sawn White Oak** is specifically cut White Oak lumber where logs are quartered, then sliced perpendicular to the growth rings of the tree. The resulting grain pattern is relatively straight, but the spacing between the grain will vary. This specie will have the normal color range of other White Oak variations, but the method of cutting eliminates cathedral grain, but allows limited amounts of mineral and pin knots to be present.



**Red Oak / Quarter Sawn Red Oak** is a hard, heavy wood which results in great wear resistance. Color ranges from white to light brown to a pinkish reddish brown. Red Oak will be plain sliced, Quarter Sawn Red Oak will be quarter sawn cut.

See hood series page for details.

Standard Base



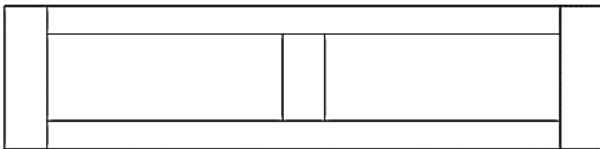
PL Base #3 Basic



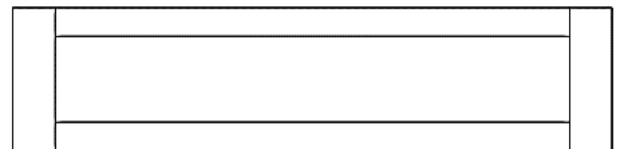
HW Base



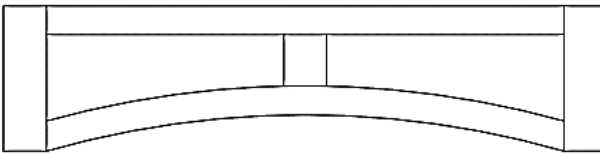
RS Base



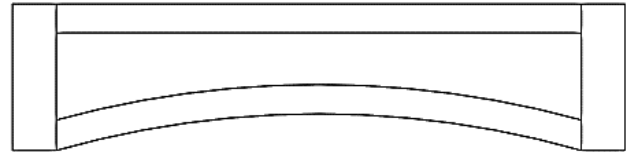
RSS Base



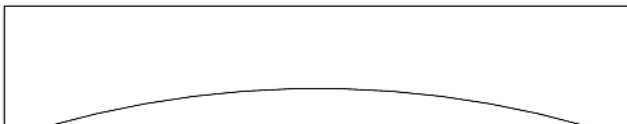
RA Base



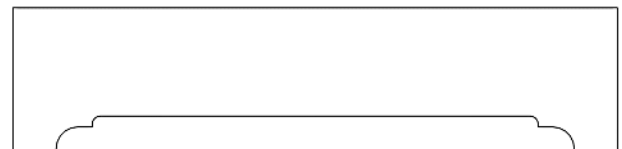
DP2 Base



SL Base



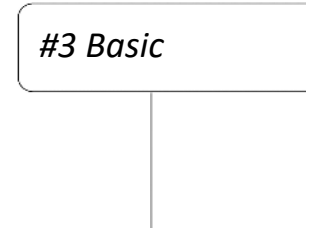
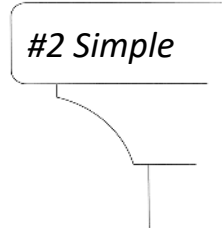
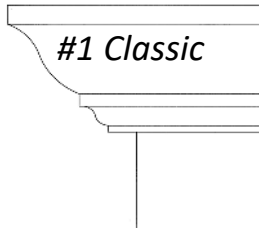
DP1 Base



METAL BAFFLE BASE – available in 17 different finishes  
(see vent section for details)



### Base Moldings Offered



A, E, G, GT, H, H2, I, J, S, W (excludes HW or SS models)

PLEASE SELECT A MOLDING OPTION BELOW




#1 Classic



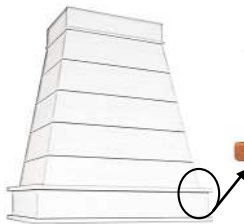

#2 Simple




#3 Basic

C, CX, E200, FX200, P, Z200 (excludes HW or SS models)

#3 BASIC IS DEFAULT MOLDING, #1 CLASSIC OR #2 SIMPLE AVAILABLE BY REQUEST.



#3 Basic - DEFAULT




#1 Classic




#2 Simple

**THESE MODELS COME WITH #3 BASIC MOLDING UNLESS AN ALTERNATE OPTION HAS BEEN SELECTED**

B, D, L, N, XRA (excludes HW or SS models)

PLEASE SELECT A MOLDING OPTION BELOW

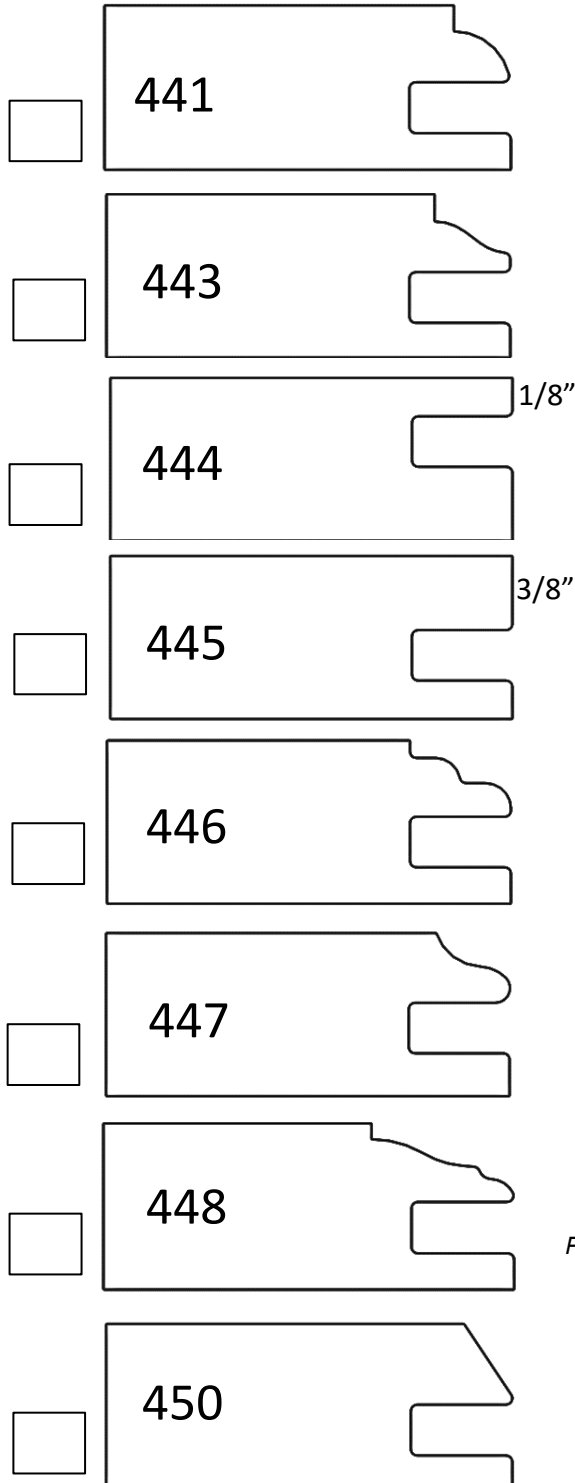



#1 Classic

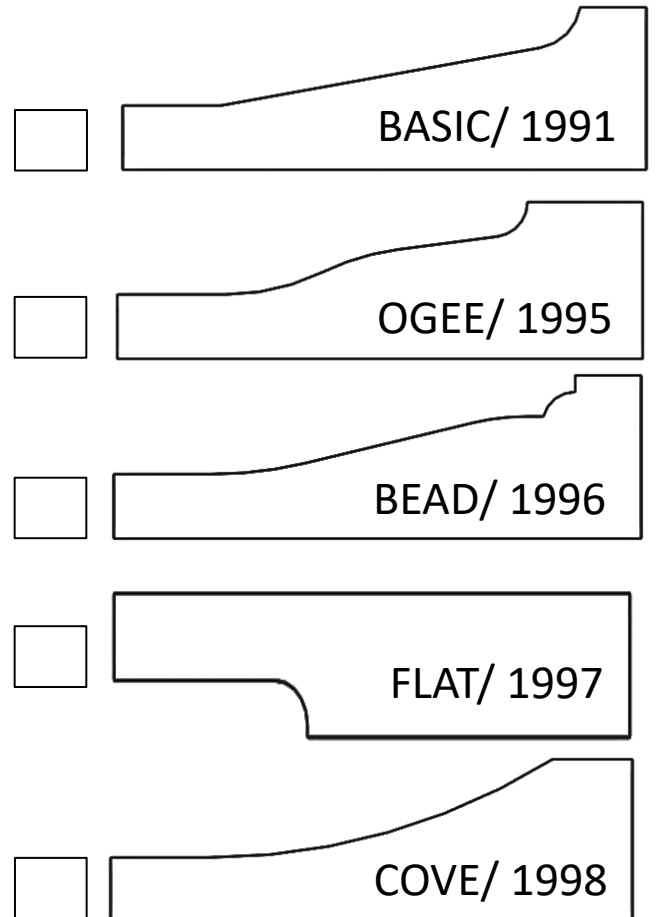



#2 Simple

#### FRAMING BEAD



#### PANEL RAISE



#### **FREE – STANDING HOODS**

Free-standing range hoods are mounted to the wall above the cooking surface, and stand alone from any adjacent cabinetry. These hoods will not have flush sides, and typically have design elements or decorative accents that prohibit a cabinet from being installed flush against the sides.



FREE-STANDING MODELS: AX, B, BXHW, C, CX, D, E, E200, ER200, ER600, FX200, G, GT, K200,

#### **IN-SERIES HOODS**

In-Series hoods are mounted to the wall above the cooking surface, and have completely flush sides. Moldings and decorative accents will not extend past the sides. This allows cabinetry to be installed on either side of the range hood to achieve a continuous design, but can also be used in a stand-alone design. .



IN-SERIES MODELS: A, BX, E300, ER300, ER400, ER500, FX300, J, K300, L2, M, N, P, Q, S, SB100, W, XRA, Z200